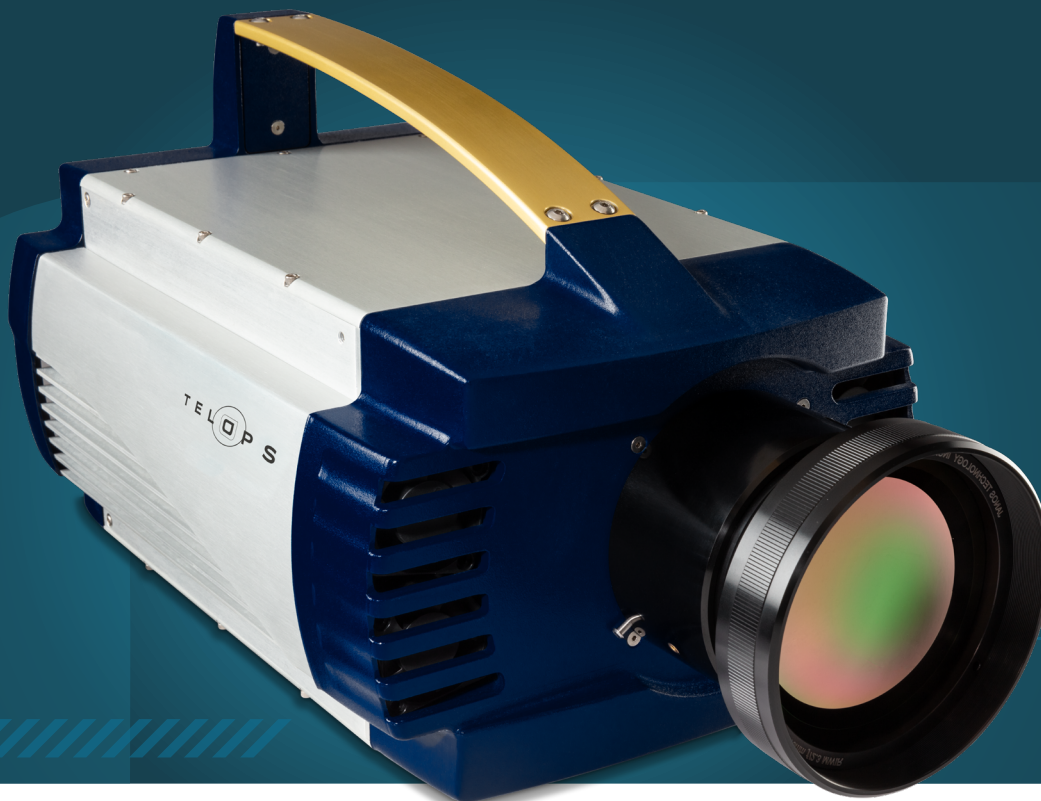


# MS M350



*High-Speed VGA-Format Scientific  
Multispectral Thermal Imaging*

## KEY FEATURES



**MULTISPECTRAL CAPABILITIES**



**HIGH DYNAMIC RANGE**



**ADVANCED CALIBRATION**



**HIGH SENSITIVITY**

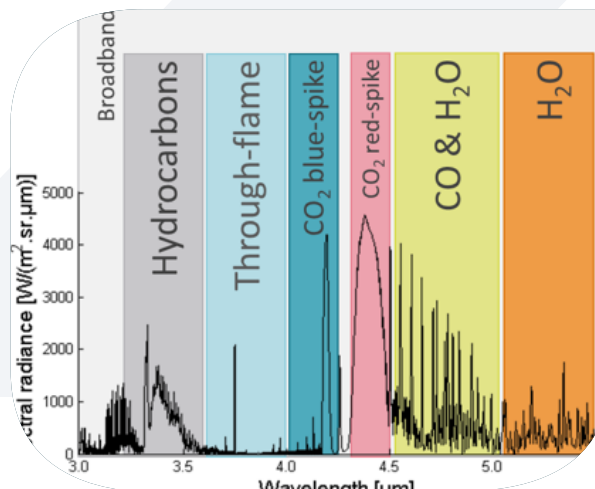
The MS-IR infrared camera allows the scene to be split into eight different spectral bands rather than only one broadband image, thus enabling spectral signature analysis. The filter wheel is a fast-rotating mechanism designed to maximize the cameras' frame rate. Rotating speed is adjustable up to 105 Hz per filter, allowing a frame rate up to 2 900 fps in a synchronised mode.



# MS M350



Multispectral image of burning wood crib



Typical MWIR combustion spectrum and filters

## KEY PERFORMANCES

Detector Type	Cooled InSb
Detector Format	640 × 512 pixels
Spectral Range	1.5 μm to 5.4 μm
Detector Pitch	15 μm
Aperture Size	F/3
Maximum Frame Rate in Full Window (Static Filter Wheel Mode)	355 Hz
Maximum Frame Rate in Subwindow (Static Filter Wheel Mode)	4 980 Hz @ 132 × 4
Maximum Frame Rate in Rotating Filter Wheel Mode	800 Hz
Typical NETD	20 mK
Exposure Time	0.5 μs to full frame rate
Lens Mount	Bayonet

[sales@telops.com](mailto:sales@telops.com)



[telops.com](http://telops.com)

**EXOSENS**  
REVEAL THE INVISIBLE